

- (A) CONCRETE ABOVE GRADE -----
- (B) BOLT PROJECTION (6" MAX.) -----
- (C) BOLT CIRCLE DIA. -----
- (D) SIZE OF ANCHOR BOLTS (SUPP. BY CONTR.) -----
- (E) SIZE OF CONDUIT (1" MAX) -----
- (F) CONDUIT OUT OF CONCRETE FROM TOP OF BASE (6" MX.) -----
- (G) CONDUIT LOCATION -----
- (H) OVERALL HEIGHT (10' MAX) -----

WEIGHT = 471 LBS./VT. FT.

CONTR.	
JOB	

*****IMPORTANT*****

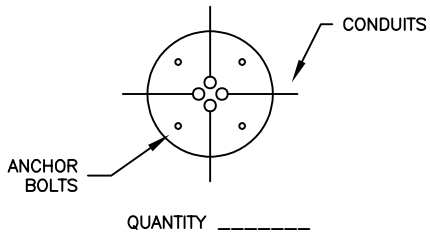
PLEASE CONFIRM THESE SPECIFICATIONS WITH YOUR SIGNATURE

_____ DATE: _____

TO EXPEDITE YOUR ORDER, PLEASE SIGN, DATE, AND RETURN. PRODUCTION WILL NOT BEGIN WITHOUT THIS COMPLETED FORM. SPECIFICATIONS ARE BASED ON PRICING ATTACHED.

ORDER SUBJECT TO APPROVAL AT CORPORATE HEADQUARTERS

SECTION VIEW
NOT TO SCALE



QUANTITY _____
PLAN VIEW
NOT TO SCALE

SPECIFICATIONS:
 -THE CONCRETE IS DESIGNED TO OBTAIN A STRENGTH OF 4,000 PSI IN 28 DAYS.
 -THE REINFORCING STEEL HAS A YIELD STRENGTH OF 60,000 PSI.



ATLANTIC CONCRETE PRODUCTS, INC.
 8900 Old Route 13
 P.O. Box 129, Tullytown, PA 19007-7129
 Phone: (215) 945-5600
 Fax: (215) 946-3102
 Web: www.atlanticconcrete.com

LIGHT POLE BASE ORDER FORM