



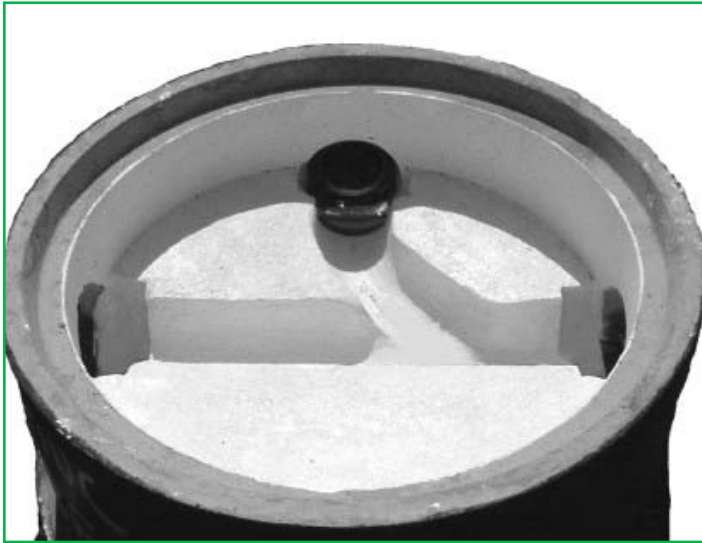
The Company With Connections®



**SECONDARY INVERT FORMING SYSTEM**

**TRU-CONTOUR**

**TRU-CONTOUR**



A-LOK Products, Inc. and Tru-Contour have joined forces to bring together the best in secondary precast inverts available today. The Tru-Contour Invert Forming System offers the manhole producer a very durable, systematic and versatile method of forming all invert configurations from 4" through 48" diameter.

**KEY ADVANTAGES**

Two, three, and four way configurations including dead end combinations with a standard .2 ft. of elevation difference (fall) can be made easy and rapidly without the need for skilled labor.

Greater fall can be obtained based on the operators' ability to experiment. The system's versatility is due to an unlimited combination of

four basic wedges. With the combination of one or more of these wedges, any angle can be obtained within 1.5 degrees. This allows enough flexibility to effectively form an invert which aligns perfectly with the entering pipeline.

System also available in Single Piece construction.

The Tru-Contour system cuts costly labor both in set-up and concrete finishing time. A basic three way can be set up in approximately fifteen minutes and depending on pouring procedures, can allow an average of four inverts per day to be formed from a single system. Finishing time is kept to a minimum due to the accuracy of flows the forms create. Each invert in regard to channel width, depth and radial turn is form finished.

The Tru-Contour standard system allows for 2/3 invert depth and is compatible with a variety of flexible pipe to manhole connectors. Full depth systems are also available.

The Tru-Contour assembly consists of:

- 1) A hole adapter which is designed to align the invert assembly with the flexible pipe to manhole connector. This insures pipe to invert compatibility.
- 2) A series of 4 wedges and straight sections which when combined provides an unlimited selection of angles to create enough flexibility to form an in invert within 1.5 degrees.
- 3) A stabilizing jack which prevents from floatation during casting operations. This insures that correct fall is maintained across the manhole base.

**AVAILABILITY CHART**

SIZE (IN/DIA.)	2-WAY	3-WAY	4-WAY
4"	•	•	•
6"	•	•	•
8"	•	•	•
10"	•	•	•
12"	•	•	•
15"	•	•	•
18"	•	•	•
21"	•		
24"	•		
27"	•		
30"	•		
36"	•		
42"	•		
48"	•		

## ● INSTALLATION INSTRUCTIONS



**#1 ASSEMBLY STARTS WITH CENTERING TRIANGLE IN LOW HOLE**



**#4 POSITION ANTI FLOTATION BAR AND ADDITIONAL CHANNEL**



**#2 ASSEMBLE SMALLEST ANGLE WITH CENTERING ADAPTOR**



**#5 POSITION HUBS**



**#3 SMALLEST ANGLE ASSEMBLY IN LOW HOLE AND UPSTREAM SIDE.**



**#6 COMPLETED THREE-WAY ASSEMBLY READY TO POUR**

**ANY QUESTIONS REGARDING TRU-CONTOUR INSTALLATION, PLEASE CALL 1-800-822-2565**