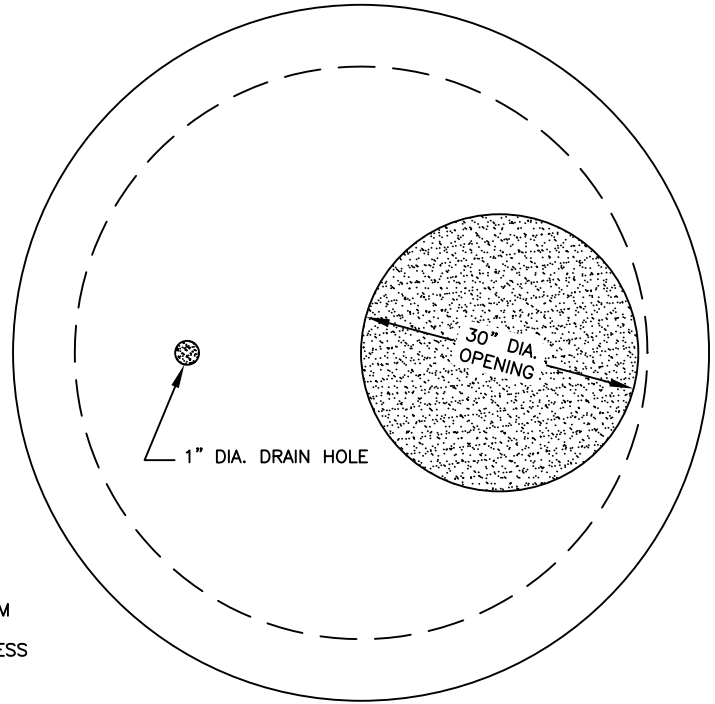
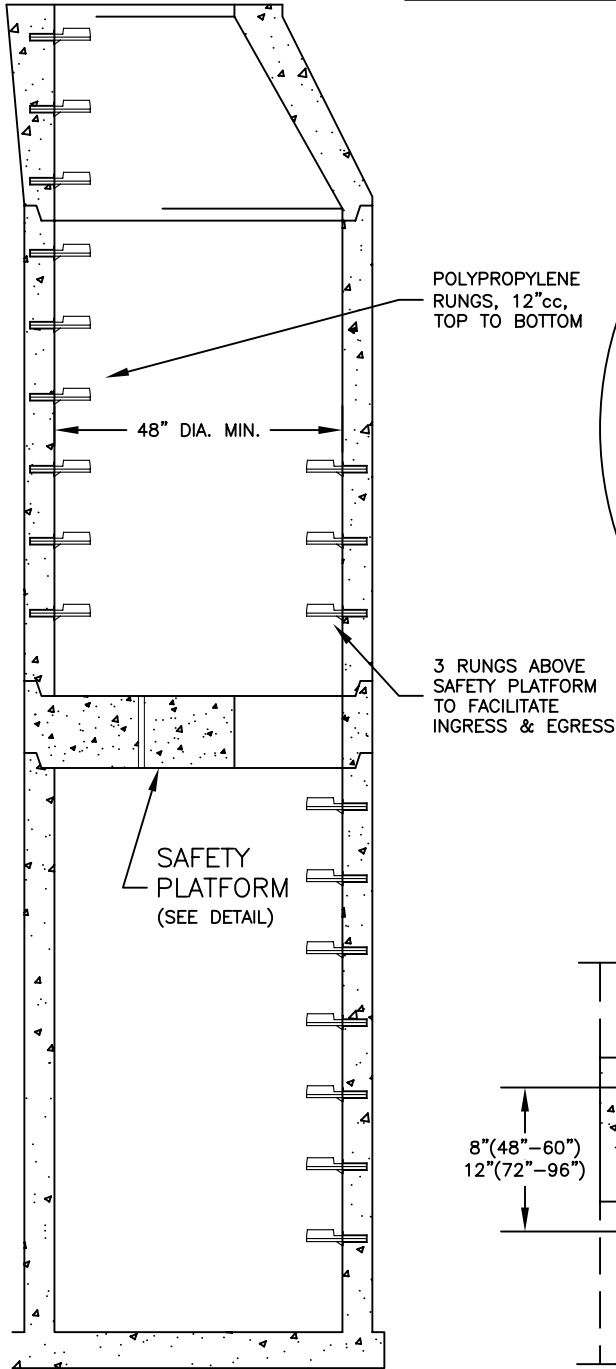


NOTE:

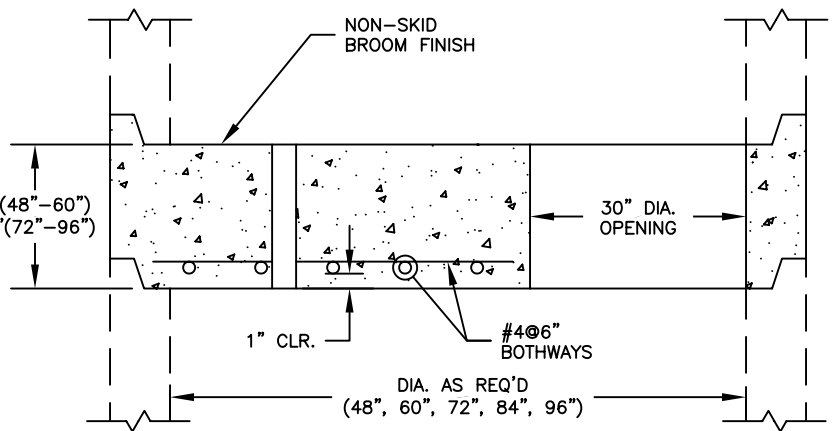
ONE SAFETY PLATFORM IS RECOMMENDED FOR STRUCTURES WHEN DEPTH REACHES 15 FT; TWO ARE RECOMMENDED IF DEPTH EXCEEDS 25 FT.

SPECIFICATIONS:

- THE CONCRETE IS DESIGNED TO OBTAIN A STRENGTH OF 4,000 PSI IN 28 DAYS.
- THE REINFORCING STEEL HAS A YIELD STRENGTH OF 60,000 PSI.
- THE SLABS ARE DESIGNED FOR 300 LBS/SQ FT. LIVE LOAD.



PLAN VIEW
NOT TO SCALE



SAFETY PLATFORM DETAIL
NOT TO SCALE

MANHOLE CROSS-SECTION
NOT TO SCALE



ATLANTIC CONCRETE PRODUCTS, INC.
8900 Old Route 13
P.O. Box 129, Tullytown, PA 19007-7129
Phone: (215) 945-5600
Fax: (215) 946-3102
Web: www.atlanticconcrete.com

SAFETY PLATFORM
FOR
DEEP MANHOLES