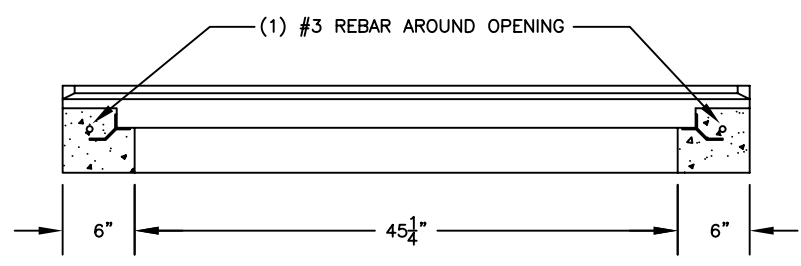


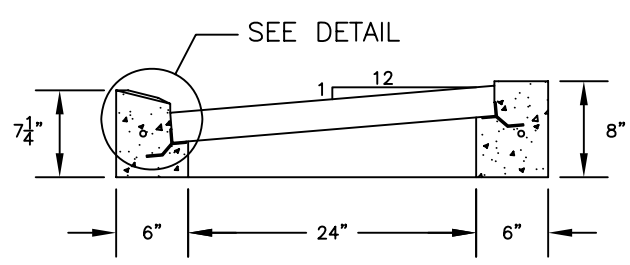
SPECIFICATIONS:
 -THE CONCRETE IS DESIGNED TO OBTAIN A STRENGTH OF 4,000 PSI IN 28 DAYS.
 -THE REINFORCING STEEL HAS A YIELD STRENGTH OF 60,000 PSI.
 -THE INLET SHALL BE DESIGNED TO MEET PENNDOT SPEC. FORM 408 FOR PRECAST CONCRETE CATCH BASINS (RC-34).

THE INLET TOP IS CAST AROUND THE FRAME FOR A STANDARD GRATE (PER PENNDOT STANDARD DRAWING RC-34); LEDGE WIDTH IS 1 1/2" AND DEPTH IS 2 1/2" ALL AROUND TO ACCOMMODATE A FRAME WITH AN ANGLE OF 1 1/4" x 1 1/4" x 1/8" (MIN.)

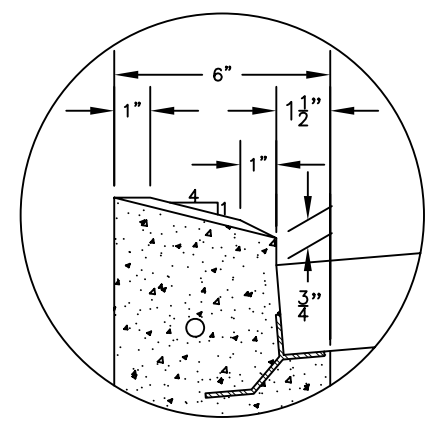
PLAN VIEW
 NOT TO SCALE



SECTION A-A
 NOT TO SCALE



SECTION B-B
 NOT TO SCALE



DETAIL
 (SEE SECTION B-B)
 NOT TO SCALE



ATLANTIC CONCRETE PRODUCTS, INC.
 8900 Old Route 13
 P.O. Box 129, Tullytown, PA 19007-7129
 Phone: (215) 945-5600
 Fax: (215) 946-3102
 Web: www.atlanticconcrete.com

INLET TOP
 PENNDOT (RC-34)
 TYPE S