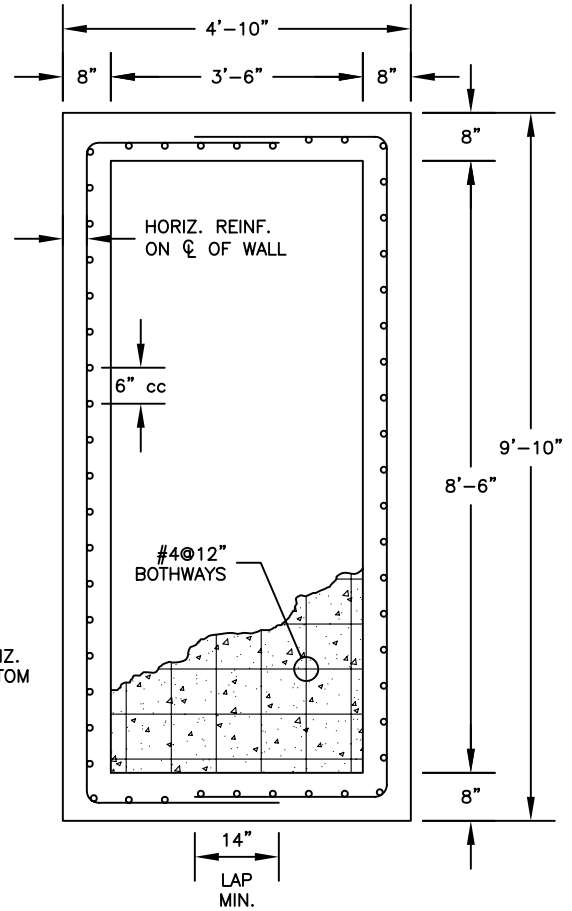
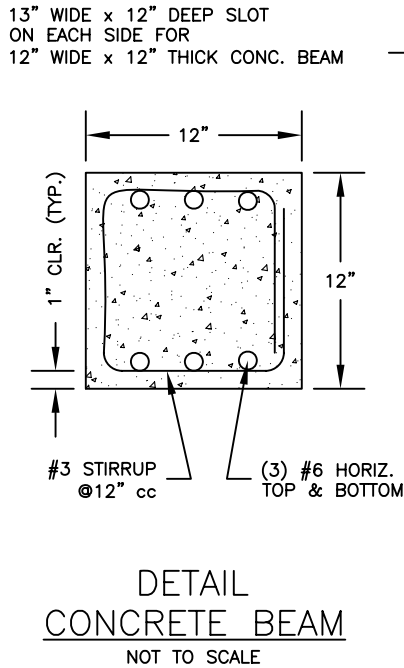
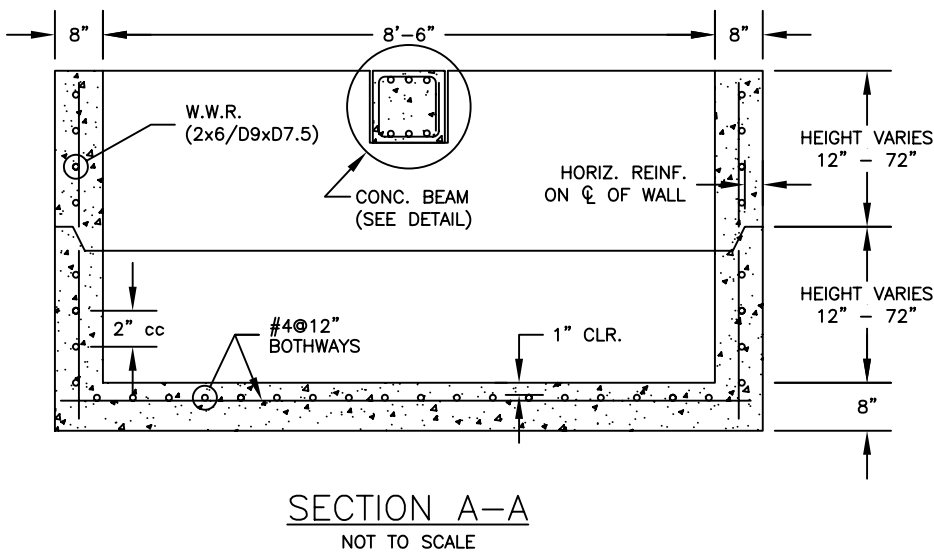


PLAN VIEW — HOLES
NOT TO SCALE



PLAN VIEW — REINFORCING
NOT TO SCALE



- SPECIFICATIONS:**
- THE CONCRETE IS DESIGNED TO OBTAIN A STRENGTH OF 5,000 PSI IN 28 DAYS.
 - THE REINFORCING STEEL HAS A YIELD STRENGTH OF 60,000 PSI.
 - THE INLET IS DESIGNED TO MEET ASTM C-913, "PRECAST CONCRETE WATER AND WASTEWATER STRUCTURES."
 - THE INLET IS DESIGNED TO WITHSTAND AASHTO HS-20 LIVE LOAD CONDITIONS (DESIGN OF HATCH AND/OR FRAME & COVER BY OTHERS).
 - THE REINFORCED CONCRETE WALLS AND BASE SLAB ARE DESIGNED FOR A MAXIMUM DEPTH OF 20 FT (DEPTH = F.G. TO TOP OF BASE SLAB).
 - STRUCTURE IS DESIGNED TO MEET NJDOT SPECS.
 - THE OPTIONAL A-LOK STORM GASKET IS DESIGNED TO MEET THE REQUIREMENTS OF ASTM C-1478, "STORM DRAIN RESILIENT CONNECTORS BETWEEN REINFORCED CONCRETE STORM SEWER STRUCTURES, PIPES, AND LATERALS."



ATLANTIC CONCRETE PRODUCTS, INC.
8900 Old Route 13
P.O. Box 129, Tullytown, PA 19007-7129
Phone: (215) 945-5600
Fax: (215) 946-3102
Web: www.atlanticconcrete.com

INLET BASE & RISER NJDOT TYPE DOUBLE B