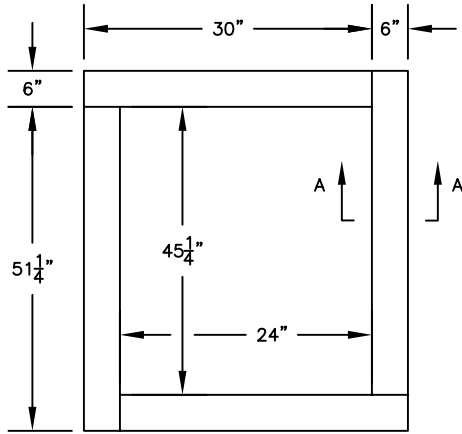


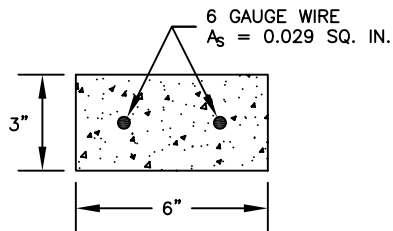
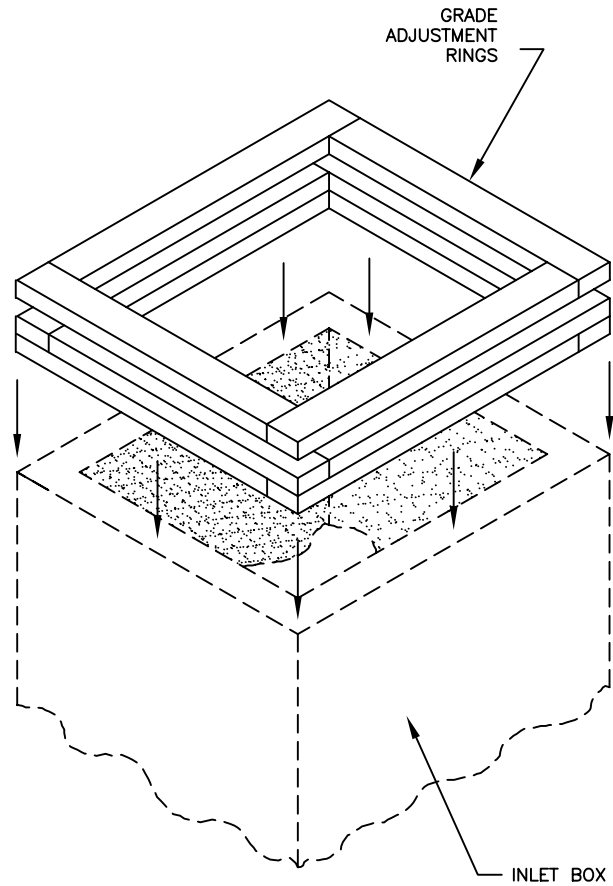
SPECIFICATIONS:

- THE CONCRETE IS DESIGNED TO OBTAIN A STRENGTH OF 4,000 PSI IN 28 DAYS.
- THE INLET IS DESIGNED TO MEET THE REQUIREMENTS OF ASTM C-913, "PRECAST CONCRETE WATER AND WASTEWATER STRUCTURES."
- THE REINFORCED CONCRETE STRUCTURE IS DESIGNED TO WITHSTAND AASHTO HS-20 LIVE LOAD CONDITIONS.
- WEIGHT OF ONE GRADE RING

3" x 6" x 30"	47 LBS
3" x 6" x 51 $\frac{1}{4}$ "	80 LBS



PLAN VIEW
NOT TO SCALE



SECTION A-A
NOT TO SCALE

NOTE:

GRADE RINGS ARE SEALED BY CONTRACTOR USING TROWELABLE BUTYL RUBBER (AS PER ASTM C-990) OR GROUT.



ATLANTIC CONCRETE PRODUCTS, INC.
8900 Old Route 13
P.O. Box 129, Tullytown, PA 19007-7129
Phone: (215) 945-5600
Fax: (215) 946-3102
Web: www.atlanticconcrete.com

GRADE RING
FOR PENNDOT INLETS
TYPE C & M & S