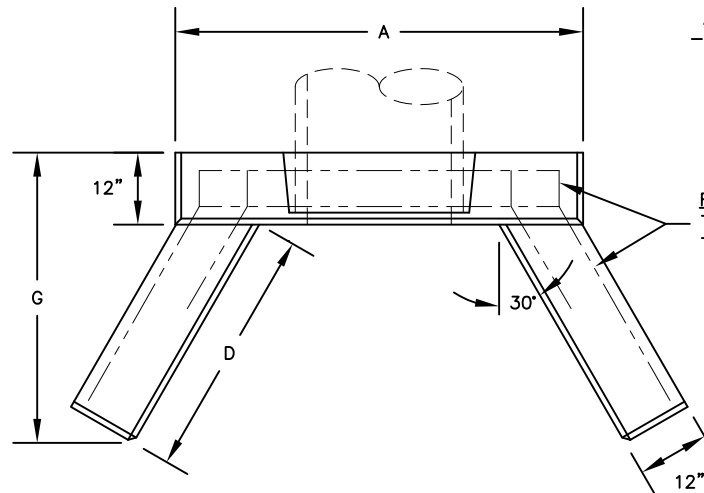


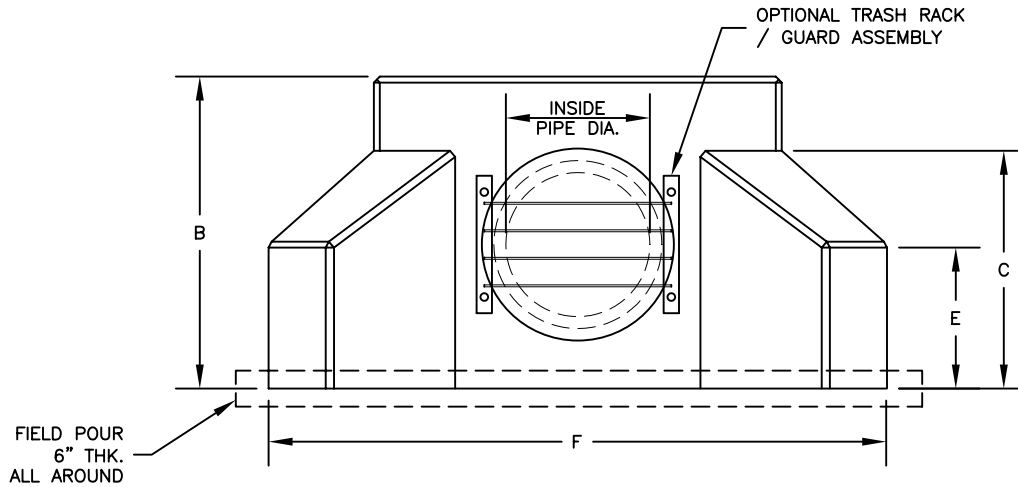
SPECIFICATIONS:

- THE CONCRETE IS DESIGNED TO OBTAIN A STRENGTH OF 4,000 PSI IN 28 DAYS.
- THE REINFORCING STEEL HAS A YIELD STRENGTH OF 60,000 PSI.



REINF. STL.
 TYPE I-III = #4@10" B.W.
 TYPE IV-VIII = #5@10" B.W.

PLAN VIEW
 NOT TO SCALE



FRONT VIEW
 NOT TO SCALE

| TYPE | INSIDE PIPE DIA. (IN) | WEIGHT (LB) | A (IN) | B (IN) | C (IN) | D (IN) | E (IN) | F (IN) | G (IN) |
|--------|-----------------------|-------------|--------|--------|--------|--------|--------|--------|--------|
| I | 12-15 | 3400 | 56 | 39 | 26 | 36 | 12 | 86 | 44 |
| II | 18-21 | 4880 | 64 | 48 | 36 | 39 | 20 | 96 | 48 |
| III | 24-27 | 5270 | 68 | 52 | 40 | 42 | 24 | 104 | 48 |
| IV | 30-36 | 9250 | 79 | 65 | 54 | 63 | 28 | 134 | 67 |
| V | 42 | 9500 | 88 | 71 | 54 | 63 | 28 | 143 | 67 |
| VI | 48 | 12780 | 96 | 78 | 66 | 81 | 30 | 170 | 83 |
| * VII | 54-60 | 32830 | 122 | 108 | 99 | 97 | 51 | 211 | 96 |
| * VIII | 72 | 41361 | 142 | 122 | 113 | 110 | 51 | 245 | 107 |

TYPE MARKED BY * INDICATES WALL MAY BE FABRICATED IN THREE (3) PIECES.



ATLANTIC CONCRETE PRODUCTS, INC.
 8900 Old Route 13
 P.O. Box 129, Tullytown, PA 19007-7129
 Phone: (215) 945-5600
 Fax: (215) 946-3102
 Web: www.atlanticconcrete.com

ENDWALL
 PENNDOT TYPE DW