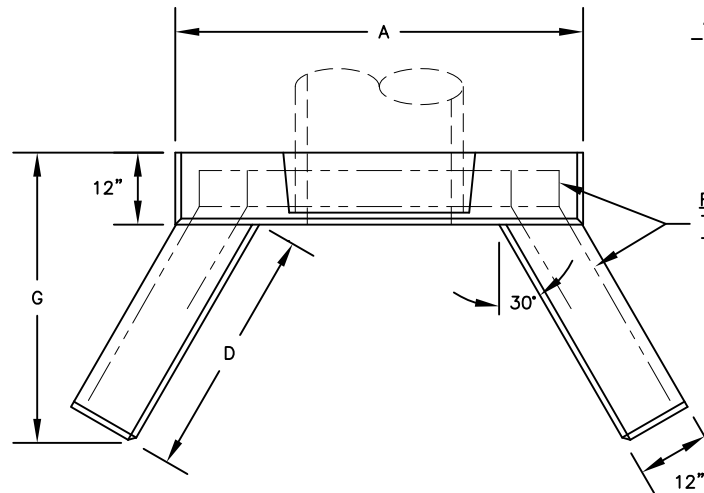


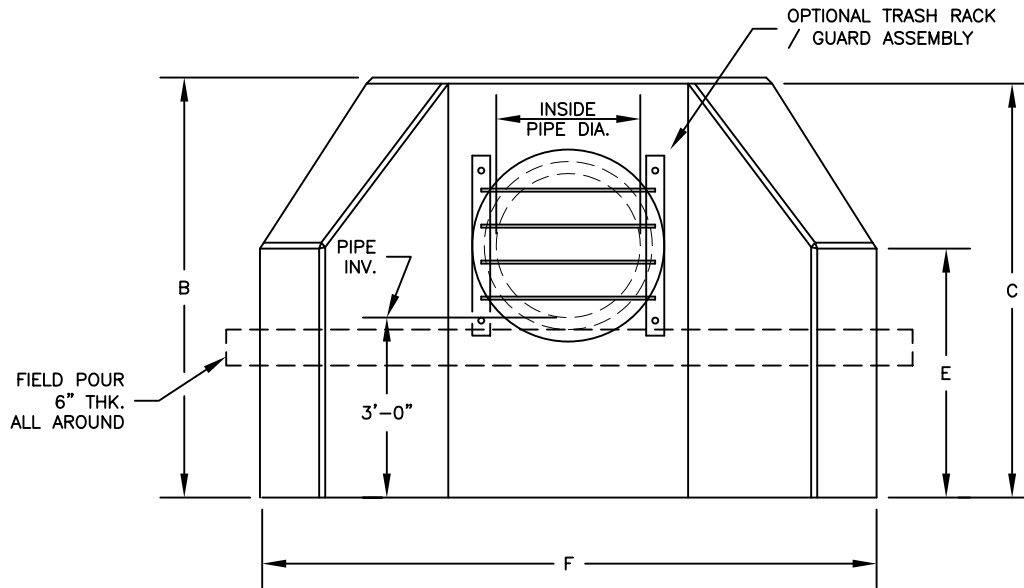
SPECIFICATIONS:

- THE CONCRETE IS DESIGNED TO OBTAIN A STRENGTH OF 4,000 PSI IN 28 DAYS.
- THE REINFORCING STEEL HAS A YIELD STRENGTH OF 60,000 PSI.



REINF. STL.
 TYPE I-IV = #4@10" B.W.
 TYPE V-VIII = #6@10" B.W.

PLAN VIEW
 NOT TO SCALE



FRONT VIEW
 NOT TO SCALE

TYPE	INSIDE PIPE DIA. (IN.)	WEIGHT (LB.)	A (IN.)	B (IN.)	C (IN.)	D (IN.)	E (IN.)	F (IN.)	G (IN.)
I	12-15	6670	56	63	63	30	51	86	38
II	18-21	9350	64	69	69	42	57	106	49
III	24-27	12060	68	75	75	54	63	122	59
IV	30-36	17270	79	84	84	72	72	151	75
* V	42	29980	111	96	93	84	83	172	85
* VI	48	35320	118	103	99	96	89	192	95
* VII	54-60	47370	132	116	112	120	102	242	116
* VIII	72	61770	148	130	126	144	116	286	137

TYPE MARKED BY * INDICATES WALL MAY BE FABRICATED IN (3) PIECES



ATLANTIC CONCRETE PRODUCTS, INC.
 8900 Old Route 13
 P.O. Box 129, Tullytown, PA 19007-7129
 Phone: (215) 945-5600
 Fax: (215) 946-3102
 Web: www.atlanticconcrete.com

ENDWALL
 NJDOT TYPE DW