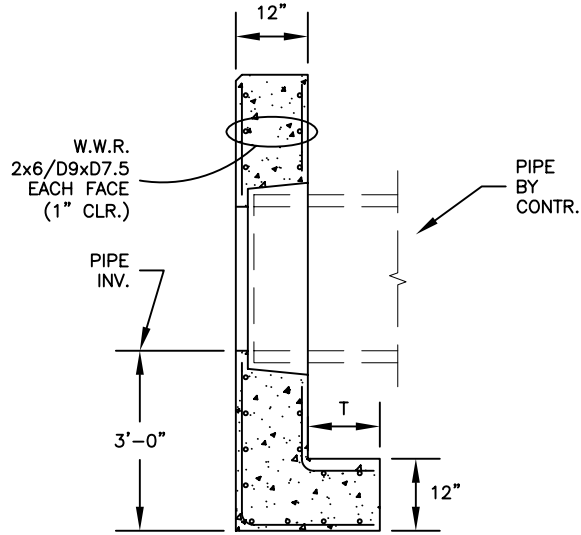
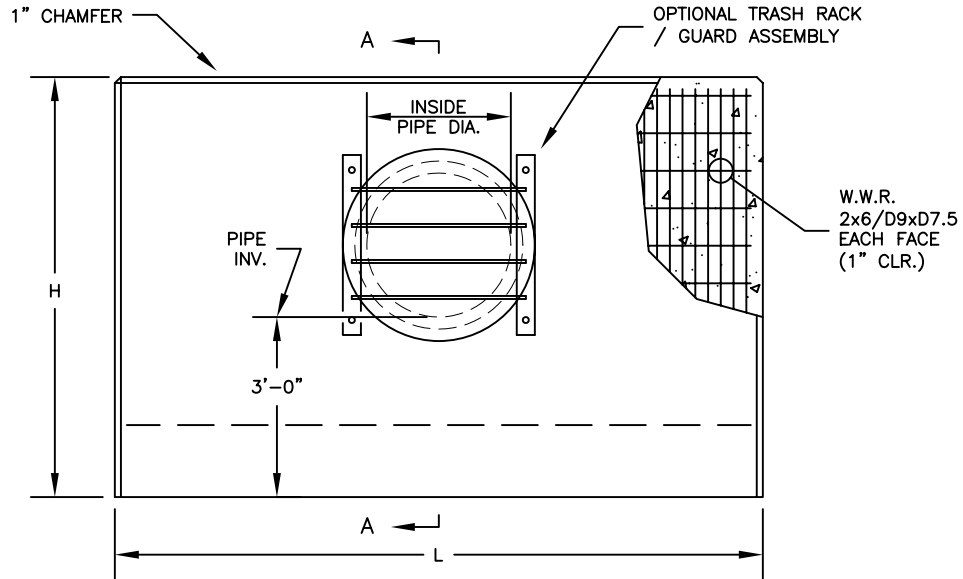


SPECIFICATIONS:

- CONCRETE TO OBTAIN A STRENGTH OF 4,000 PSI IN 28 DAYS.
- WELDED WIRE REINFORCEMENT TO HAVE A YIELD STRENGTH OF 75,000 PSI.



SECTION A-A
NOT TO SCALE



FRONT VIEW
NOT TO SCALE

TYPE	INSIDE PIPE DIA. (IN.)	WEIGHT (LB.)	L (IN.)	H (IN.)	T (IN.)
I	12-15	4360	60	63	12
II	18-21	6490	84	69	12
III	24-27	9520	108	75	18
IV	30-33	12240	132	81	18
V	36	14320	144	84	24
VI	42	17480	168	90	24



ATLANTIC CONCRETE PRODUCTS, INC.
8900 Old Route 13
P.O. Box 129, Tullytown, PA 19007-7129
Phone: (215) 945-5600
Fax: (215) 946-3102
Web: www.atlanticconcrete.com

ENDWALL
NJDOT TYPE D