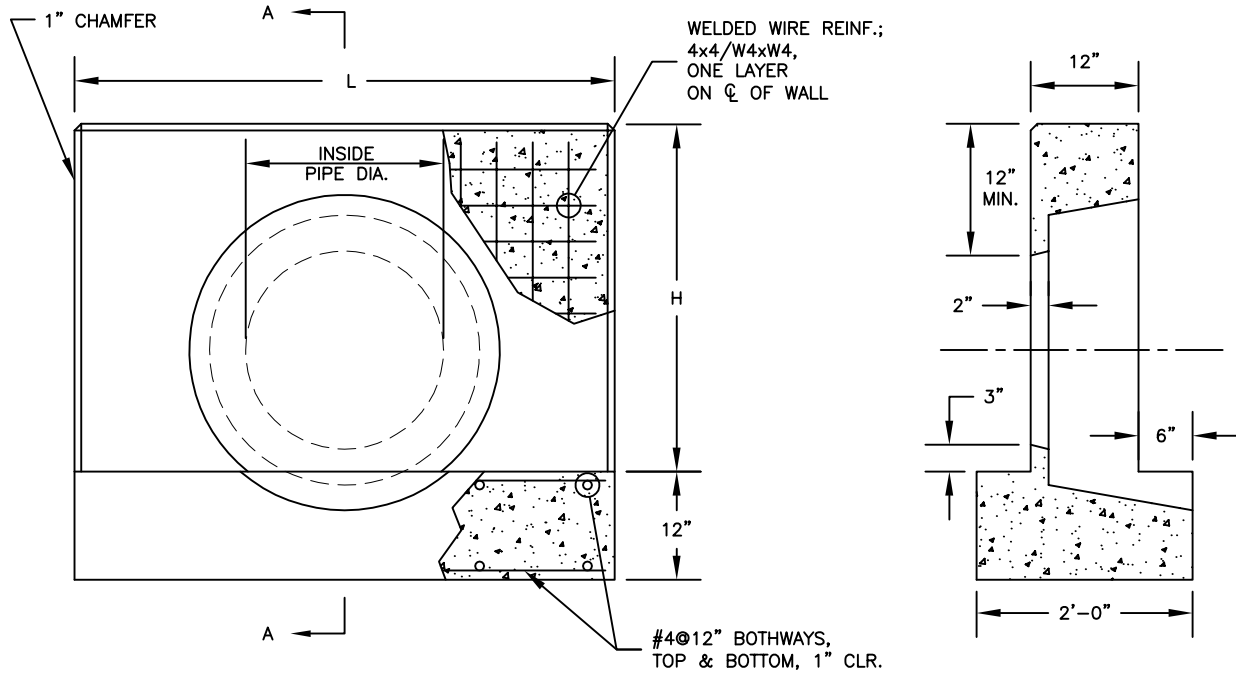


SPECIFICATIONS:

- THE CONCRETE IS DESIGNED TO OBTAIN A STRENGTH OF 4,000 PSI IN 28 DAYS.
- THE REINFORCING STEEL HAS A YIELD STRENGTH OF 60,000 PSI.
- THE WELDED WIRE REINFORCEMENT HAS A YIELD STRENGTH OF 75,000 PSI.



FRONT VIEW
NOT TO SCALE

SECTION A-A
NOT TO SCALE

INSIDE PIPE DIA. (IN)	WEIGHT (LBS)	L (IN)	H (IN)
12-15	3,375	60	30
18-21	3,750	60	36
24-27	5,775	84	42
30-33	7,200	108	48
36	7,900	108	57
42	9,380	128	66



ATLANTIC CONCRETE PRODUCTS, INC.
 8900 Old Route 13
 P.O. Box 129, Tullytown, PA 19007-7129
 Phone: (215) 945-5600
 Fax: (215) 946-3102
 Web: www.atlanticconcrete.com

**ENDWALL
PENNDOT TYPE D**