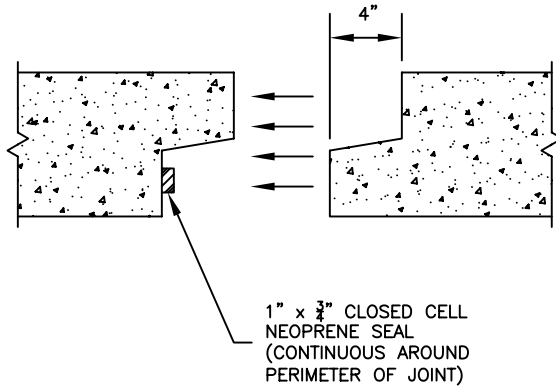


SPECIFICATIONS:

- THE CONCRETE IS DESIGNED TO OBTAIN A STRENGTH OF 5,000 PSI IN 28 DAYS.
- THE WELDED WIRE FABRIC HAS A YIELD STRENGTH OF 75,000 PSI.
- THE BOX CULVERT IS DESIGNED TO MEET THE REQUIREMENTS OF ASTM-C-1433, "PRECAST REINFORCED CONCRETE MONOLITHIC BOX SECTIONS FOR CULVERTS, STORM DRAINS, AND SEWERS."
- ALL VERTICAL JOINT LOCATIONS ARE TO BE DETERMINED BY THE PRODUCTION DEPARTMENT.

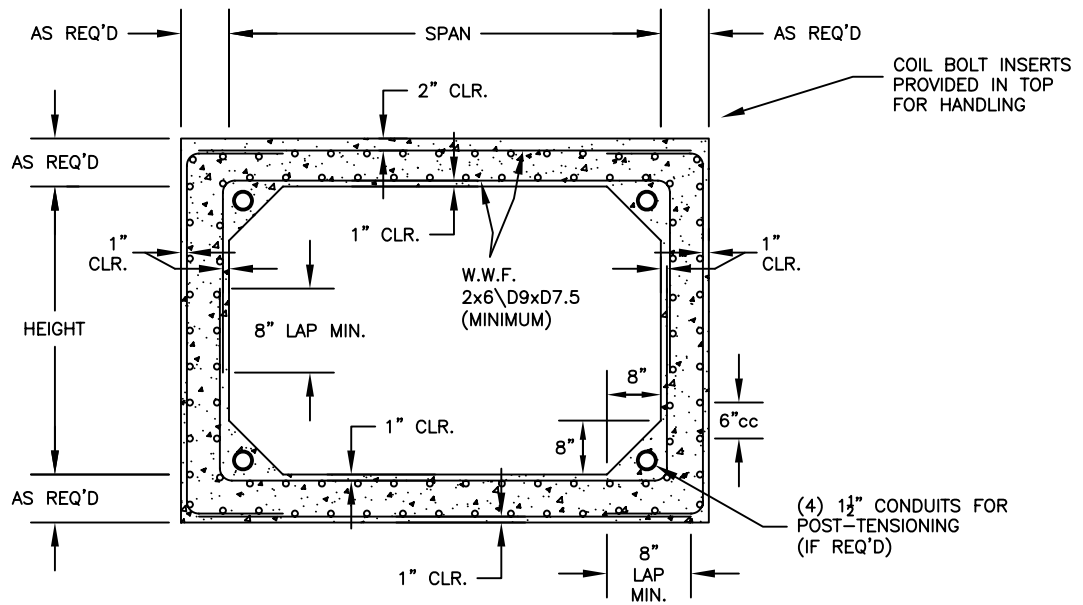


DETAIL - JOINT
NOT TO SCALE

CULVERTS ARE AVAILABLE
IN VARIABLE SIZES

$2 \times (\text{SPAN} + \text{HEIGHT}) = 56'$ MAXIMUM

LENGTH = 8' MAXIMUM



CROSS-SECTION
NOT TO SCALE



ATLANTIC CONCRETE PRODUCTS, INC.
8900 Old Route 13
P.O. Box 129, Tullytown, PA 19007-7129
Phone: (215) 945-5600
Fax: (215) 946-3102
Web: www.atlanticconcrete.com

BOX CULVERT