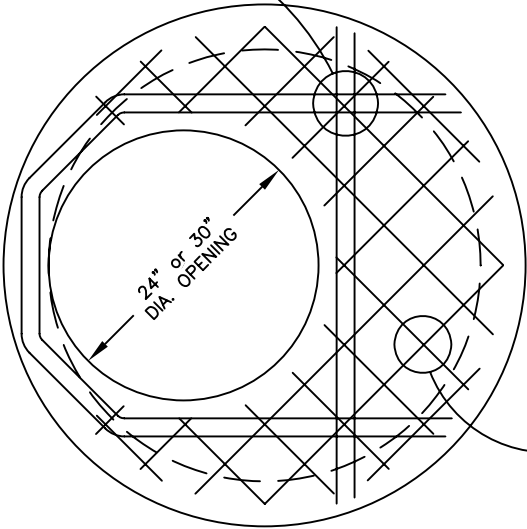


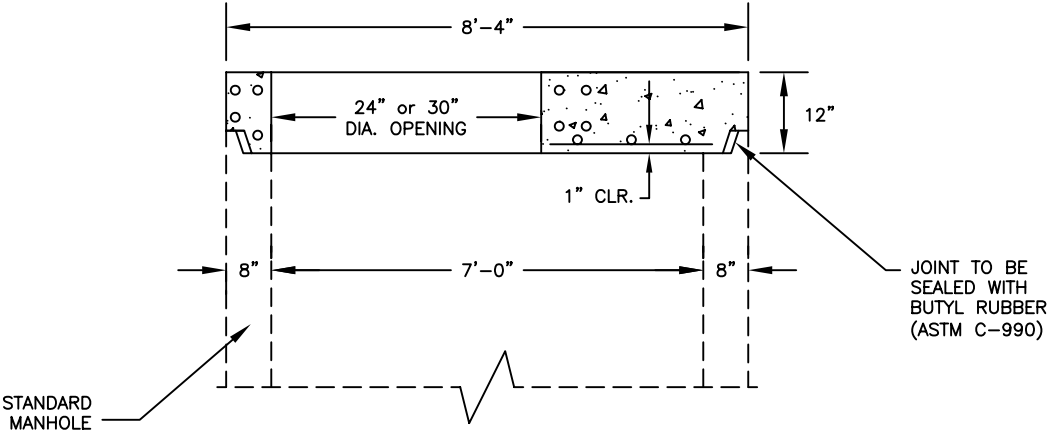
- SPECIFICATIONS:**
- THE CONCRETE IS DESIGNED TO OBTAIN A STRENGTH OF 4,000 PSI IN 28 DAYS.
  - THE REINFORCING STEEL HAS A YIELD STRENGTH OF 60,000 PSI.
  - THE MANHOLE IS DESIGNED TO MEET THE REQUIREMENTS OF ASTM C-478, "PRECAST REINFORCED CONCRETE MANHOLE SECTIONS."
  - THE REINFORCED CONCRETE STRUCTURE IS DESIGNED TO WITHSTAND AASHTO HS-20 LIVE LOAD CONDITIONS (DESIGN OF HATCH AND/OR FRAME AND COVER BY OTHERS).

(2) #4 AROUND OPENING, TOP AND BOTTOM (TYP.)



#6@8" BOTHWAYS

PLAN VIEW  
NOT TO SCALE



JOINT TO BE SEALED WITH BUTYL RUBBER (ASTM C-990)

CROSS SECTION  
NOT TO SCALE



ATLANTIC CONCRETE PRODUCTS, INC.  
8900 Old Route 13  
P.O. Box 129, Tullytown, PA 19007-7129  
Phone: (215) 945-5600  
Fax: (215) 946-3102  
Web: www.atlanticconcrete.com

TOP SLAB  
84" DIA. MANHOLE