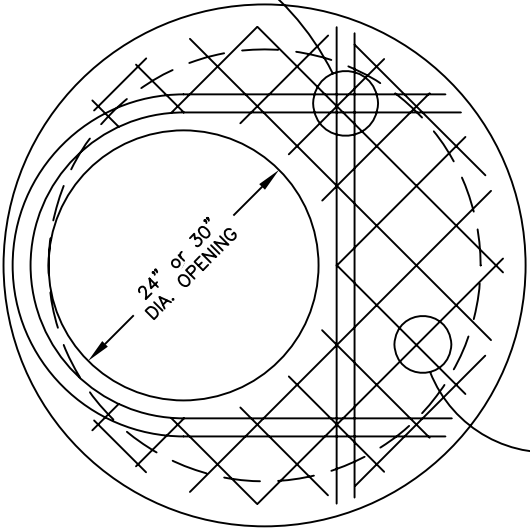


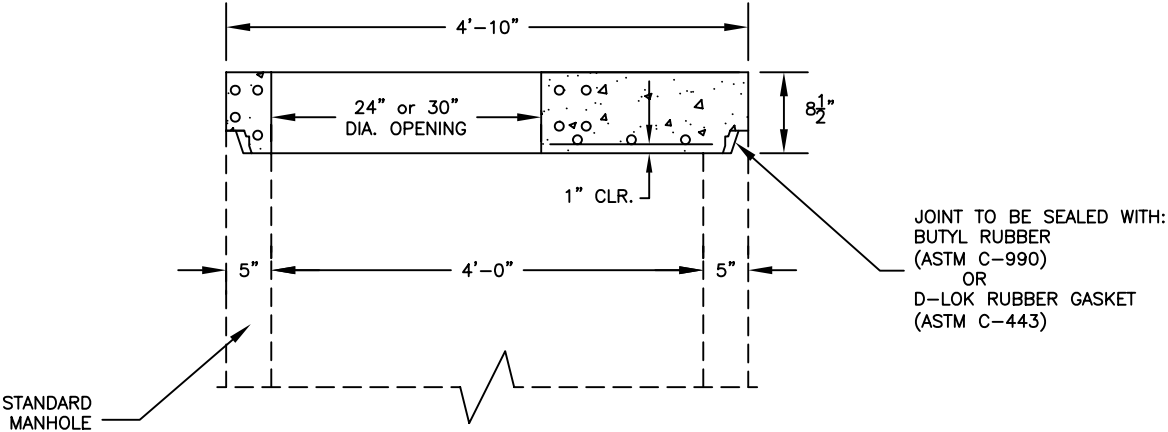
- SPECIFICATIONS:**
- THE CONCRETE IS DESIGNED TO OBTAIN A STRENGTH OF 4,000 PSI IN 28 DAYS.
 - THE REINFORCING STEEL HAS A YIELD STRENGTH OF 60,000 PSI.
 - THE MANHOLE IS DESIGNED TO MEET THE REQUIREMENTS OF ASTM C-478, "PRECAST REINFORCED CONCRETE MANHOLE SECTIONS."
 - THE REINFORCED CONCRETE STRUCTURE IS DESIGNED TO WITHSTAND AASHTO HS-20 LIVE LOAD CONDITIONS (DESIGN OF HATCH AND/OR FRAME AND COVER BY OTHERS).

(2) #4 AROUND OPENING, TOP AND BOTTOM (TYP.)



#4@6" BOTHWAYS

PLAN VIEW
NOT TO SCALE



JOINT TO BE SEALED WITH:
BUTYL RUBBER
(ASTM C-990)
OR
D-LOK RUBBER GASKET
(ASTM C-443)

STANDARD MANHOLE

CROSS SECTION
NOT TO SCALE



ATLANTIC CONCRETE PRODUCTS, INC.
8900 Old Route 13
P.O. Box 129, Tullytown, PA 19007-7129
Phone: (215) 945-5600
Fax: (215) 946-3102
Web: www.atlanticconcrete.com

TOP SLAB
48" DIA. MANHOLE